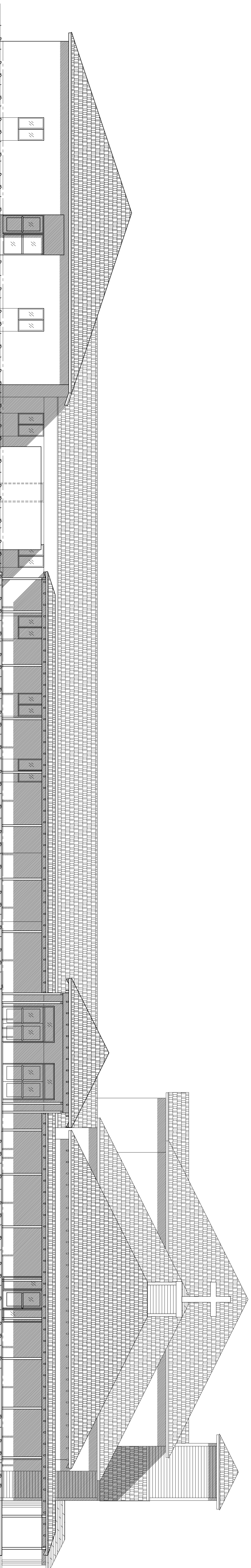


WEST ELEVATION
SCALE: 1/8"=1'-0"

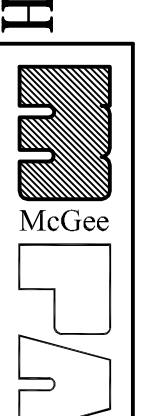


NORTH ELEVATION
SCALE: 1/8"=1'-0"

FOR REVIEW AND COMMENT 04.27.07

PROPOSED ADDITION TO:
CHRIST COMMUNITY CHURCH
229 N. WILLIAMSON BLVD.
DAYTONA BEACH, FLORIDA 32114

CONCEPTUAL BUILDING ELEVATIONS



Kenneth McGee Architect
211 N. Ridgewood Ave., Suite 201
Daytona Beach, Florida 32114
Tel: (904) 258-5990
Fax: (904) 258-0060
kmac@kmacarch.com
Florida Registration # AC0001827